

HONOR STAR®-SERIES FAB15 FALL ARREST BLOCKS

HONOR FALL ARRESTERS

- Modular quick-acting braking system
- Minimum braking distance
- Very low fall arrest forces
- Lightweight, robust aluminium housing & modules - powder coated
- Corrosion-resistant stainless steel & aluminium internal components
- Snaphook with non-resettable 'service-indicator'
- Swivable connection eye
- Max. 15m
- Max. load: 150kg

- Tested and approved to EN360 standards

PRODUCT CODE

710HSCR011015001	Honor Star®-Series FAB15-S Fall Arrest Block, Stainless Steel Wire, 15m
-------------------------	---



HONOR STAR®-SERIES FAB15R RECOVERY BLOCK

- Integrated manual recovery function
- Modular quick-acting braking system
- Modular recovery winch
- Very low force needed to raise or lower the worker
- Minimum braking distance
- Very low fall arrest forces
- Lightweight, robust aluminium housing & modules - powder coated
- Corrosion-resistant stainless steel & aluminium internal components
- Snaphook with non-resettable 'service-indicator'

- Swivable connection eye
- Max. 15m
- Max. 150kg
- Tested and approved to EN360, EN1496, EN1808, EN1809 standards

PRODUCT CODE

710HSCR011015101	Honor Star®-Series FAB15R-S, Stainless Steel Wire, 15m
-------------------------	--



HONOR STAR®-SERIES FPED15 SELF RETRACTABLE DESCENDER AND FALL ARREST BLOCK

- Modular automatic descent-brake
- Descent speed max 1.3m/s (100kg)
- Modular quick-acting braking system
- Very low fall arrest forces
- Lightweight, robust aluminium housing & modules - powder coated
- Corrosion-resistant stainless steel & aluminium internal components
- Swivable connection eye
- Max. 15m
- Max. load: 150kg

- Tested and approved to EN360, EN341 standards

PRODUCT CODE

710HSCR012015100	Honor Star®-Series FPED15-G, Galvanized Steel Wire, 15m
-------------------------	---



HONOR STAR®-SERIES CWD12 CLIMBING WALL DESCENDER

- Modular automatic descent-brake
- Descent speed max. 1.2m/s (150kg)
- Kernmantle rope, 12m
- Lightweight, robust aluminium housing & modules - powder coated
- Corrosion-resistant stainless steel & aluminium internal components
- Max. 12m
- Lifeline: kernmantle 9.5mm (EN1891 Type A)
- Max. load: 150kg, min. load: 30kg

PRODUCT CODE

710HSCR013015000	Honor Star®-Series CWD12, Kernmantle Rope, 12m
-------------------------	--



HONOR STAR®-SERIES MOD450 MULTIPLE PERSON DESCENT AND RESCUE DEVICE

HONOR RESCUE EQUIPMENTS

- Modular automatic descent module
- Descent speed max. 0.6m/s (100kg)
- Modular integrated manual rescue function
- Very low force needed to winch to lift worker
- Lightweight, robust aluminium housing & modules - powder coated
- Corrosion-resistant stainless steel & aluminium internal components
- Swivable connection eye
- Max. 450m
- Lifeline: kernmantle 9.5mm (EN1891 Type A)

- Max. load: 240kg, min. load: 60kg
- Tested and approved to EN341, EN 1496, EN 1808, EN 1809 standards

PRODUCT CODE

710HSCR013400000	Honor Star®-Series MOD450 Multiple Person Descent and Rescue Device, 450m
-------------------------	---





HONOR RESCUE EQUIPMENTS



- Designed specifically for confined space entry and retrieval - man-rated for raising, lowering or supporting workers
- Usage counter monitors extent of winch use
- Load can only move if the handle is turned - friction brake is engaged by min. 2kg weight
- Double redundant braking mechanism with centrifugal safety back up brake
- Easy manual operation: simply rotate the handle
- Gear ratio: 5:1
- Swiveling self-locking snap hook

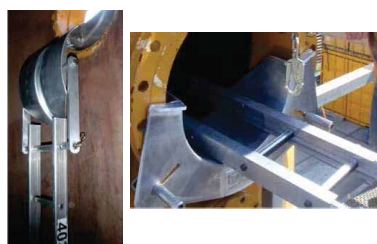
HONOR STAR®-SERIES MRW15 MANRIDING WINCH

PRODUCT CODE

710HSCR011015001 | Honor Star®-Series MRW15
Manriding Winch, 15m

- Durable and lightweight cast aluminium housing cover, winch module and overspeed brake
- Corrosion resistant rope drum, gears and stainless steel internal components
- Tested and approved to EN1808 standards

HONOR RESCUESLIDE® FOR SAFE ENTRY AND RESCUE THROUGH HORIZONTAL MANHOLES



- Can be used self-contained or with FlangeClamp® and a fall arrest or recovery block - this combination is ideal for confined entry and rescue
- Ergonomic design
- Rescue people through horizontal manholes preventing injuries and reduce loss of free manhole space (while body is passing through)
- Horizontal manhole dia. 500mm and 600mm
- Clamped onto flange by 2 clamps
- Aluminium
- Weight: 18kg

PRODUCT CODE

710HSCR010210200 | Honor RescueSlide®, Aluminium

HONOR MOBILE ANCHORS



- Ideal in case of little space between vessel and flange in front of the manhole (platform)
- Anchor point for: SRLs, recovery blocks, rescue devices, manriding winches
- Standardized for ANSI and API 20" and 24" flanges
- Evacuation devices can be mounted on FlangeClamp
- Steel, galvanized and colour coated
- Max. 1 worker
- Tested and approved to EN795 Type B standards

HONOR FLANGECLAMP® MOBILE ANCHOR FOR HORIZONTAL MANHOLES

PRODUCT CODE

710HSCR010210030 | Honor FlangeClamp® Mobile
Anchor, 1 worker



- Can be used for both vertical fall arrest, rescue equipment and horizontal lifeline systems
- Mobile anchor for: height safety devices, recovery blocks, lanyards, (temporary) horizontal lifeline systems, rescue systems and descent device's (evacuation)
- Fixed by 2 steel fixation bolts with locking nuts
- Erlaton® slide parts on the inside of clamp
- TankClamp & Star-series devices can be used in a vertical application for safe entry of confined spaces

HONOR TANKCLAMP® MOBILE ANCHOR ON STORAGE TANKS, PITS, ETC.

- Horizontal lifeline can be installed between 2, TankClamp placed opposite each other
- Steel, galvanized and colour coated
- Max. 2 workers
- Tested and approved to EN795 Type B standards

PRODUCT CODE

710HSCR010210020 | Honor TankClamp® Mobile
Anchor, 2 workers

HONOR STAR®-SERIES LA15 LOAD ARRESTOR



- Arrests the accidental fall of heavy objects
- Max. load rating 300kg
- Double redundant braking mechanism with centrifugal safety back up brake
- Inertia activated brake
- Energy absorbing system
- Self-retracting lifeline
- Portable and self-contained system
- Lightweight, heavy duty durable construction
- Corrosion-resistant aluminium rope drum and stainless steel internal components

- Swiveling self-locking snap hook provides secure connection to the load and prevents cable from twisting for smoother operation
- Safety hook with non-resetable impact indicator
- Reserve lifeline system - allows brake to activate and absorb energy if fall occurs at the end of the lifeline

PRODUCT CODE

710HSCR010015500 | Honor Star®-Series LA15 Load
Arrestor

HONOR HONOROPe®-T TEMPORARY HORIZONTAL LIFELINE

MILLER® CONFINED SPACE SYSTEMS

- Consists of 25m kernmantle rope, HoPress® eyelet at one end and Rope Vice Tensioner (RVT), stainless steel, for rapid tensioning
- Max. span: 25m
- Max. no. of workers: 5
- Max. end anchorage load: 7.7kN
- 16mm kernmantle rope
- Tested and approved to EN795 Type C standards

PRODUCT CODE

710HSCR010330007	Honor HONORope-T Temporary Horizontal Lifeline, 5 Users, 25m
-------------------------	--



HEIGHTEC RESCUEPACK FALL ARREST RESCUE SYSTEM

HEIGHTEC RESCUE EQUIPMENTS

- Mechanical advantage for lifting of around 3:1
- Rope device can pay rope out but lock when a load is applied
- Telescopic pole extends for 3.5m to reach a casualty on an extended energy absorbing lanyard
- Does not require the rescuer to be part of the system
- Able to raise a casualty over an edge or hand rail
- Requires only one quarter of the rope used by competing designs

PRODUCT CODE

710HTGWK32025	Heightec RescuePack Fall Arrest Rescue System, 25m
----------------------	--

710HTGWK32050	Heightec RescuePack Fall Arrest Rescue System, 50m
----------------------	--



HEIGHTEC CHRYSALIS RESCUE STRETCHER

- Can be used for both horizontal and vertical lifting for rescue from a wide range of confined, exposed or high locations
- Integral support stirrup of the stretcher enables vertical lifting from one lifting point
- Rescue stretcher has six patient restraint straps to ensure the casualty is kept secure as well as one head restraint system
- Contains full body casualty harness providing an unrivalled combination of fit, comfort and strength

- Quick buckle system means using the harness is fast and simple
- High abrasions resistance of the outer case and the high visibility design ensures ultimate protection of the casualty
- Complete with durable PVC storage bag
- Tested with 4m fall with a test mass of 125kg
- Conforms to the dynamic performance of EN 361

PRODUCT CODE

710HTGMS01	Heightec Chrysalis Rescue Stretcher
-------------------	-------------------------------------



